

# New Addington Community Diagnostic Centre

February 2025 update



*Excellent care for all*

Home | Community | Hospital

# Overview

Community diagnostic centres (CDCs) have been launched across the country as a 'one stop shop' for NHS testing to offer additional capacity, closer to home.

In Croydon, we received £14 million to develop two CDCs in the north and south of the borough, at New Addington and Purley.

Both locations were selected to support ongoing integration within communities (based on high streets, in areas well served by public transport) and to ensure we are delivering on our ambitions to reduce health inequalities, by targeting those in most need (aging population and those living in more deprived neighbourhoods).

We'll be providing additional diagnostic services across respiratory, cardiology and imaging, as well as providing specific pathways tailored to the needs of our local patients.



## Improving our care for patients

- Expansion of existing x-ray, ultrasound and CT scanning services, which will support the earlier identification of serious illnesses such as cancer and heart disease
- Help to prevent the worsening of existing health issues and ensure our patients receive the care they need as quickly as possible, in a place that suits them
- Addressing unmet patient needs by providing specialist advice on diagnosis and supporting primary care in making final diagnoses.
- Increase access in areas where it is most needed to make it easier for residents to essential health services
- Support our ongoing elective recovery programme, to reduce the length of time patients are waiting for care following a referral

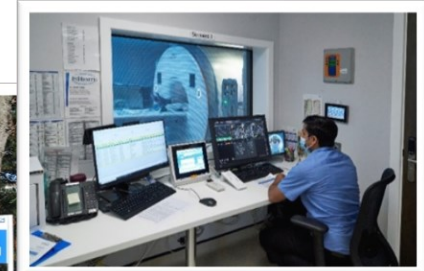
# For information: Purley CDC

We have already seen some success with CDCs in the south of the borough at Purley.

Purley CDC is based at Purley War Memorial Hospital, alongside existing diagnostic and primary care services, strengthening our MDT approach to care.

Launched in January 2024, with a number of developed pathways, we are currently providing the following services:

- **Respiratory Pathways- Suspected Asthma, Suspected COPD, Suspected Sleep Apnoea and SOB of unknown cause (cardiac cause excluded)**
- **Echocardiogram**
- **Ambulatory Ecocardiogram**
- **Ambulatory Blood pressure**
- **DEXA**
- **Fluroscopy and IR**
- **US**
- **CT**
- **X-ray- Walk in service / Direct access**



## Shorter diagnostic waiting times

- **Asthma - 1 week**
- **COPD - 2-3 weeks**
- **Breathlessness- 7 weeks**
- **Sleep Apnoea - 1 week**
- **Ambulatory ECG and BP - 2-3 weeks**
- **ECG - 3-4 weeks**
- **CT - 5 weeks**
- **X-ray - walk in service**
- **Ultrasound - under 7 weeks**

## Increasing capacity

Since our launch, we've been able to provide an additional 20,631 procedures and tests for Croydon patients so far.

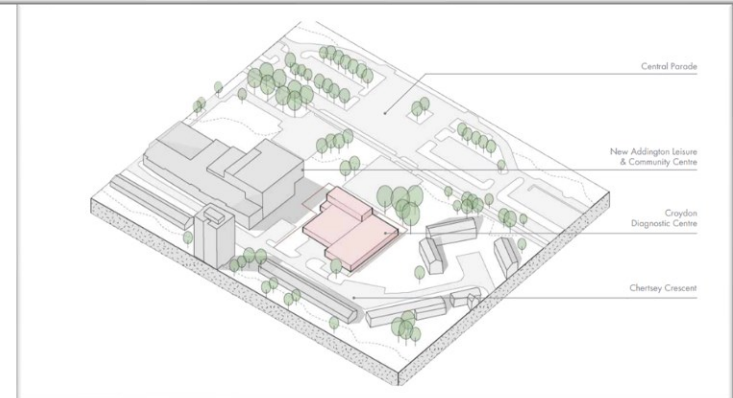
# New Addington CDC

New Addington CDC is set to open in July 2025, completing our latest expansion of community services and forming part of our existing network of community locations.

As well as the core services listed below, we also have the opportunity to pilot new pathways, tailored to the needs of our patients – for example in Purley, these include two trial pathways for Breathlessness and Gynaecology, to respond to increasing numbers of patients requiring this care.

- Shared respiratory pathway with Purley
- Echocardiogram
- Ambulatory Echocardiogram
- Ambulatory Blood pressure
- US
- CT
- X-ray

The centre will also house on site GP practices with direct access to the diagnostic tests, making it easier for patients to get the tests they need.



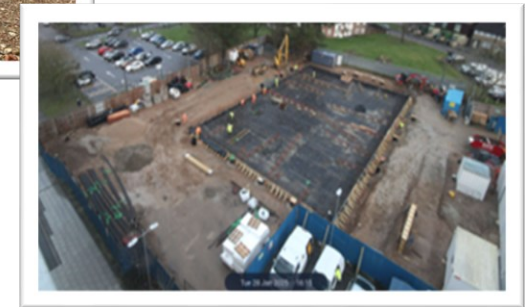
## Central location

- The site (the former New Addington Leisure Centre) is central, easily accessible for residents - less than a 5 minute walk from New Addington tram stop
- We are working to deliver a simple, modern modular design that supports the accessibility needs of patients and local residents

# Progress and milestones

Significant progress has been made over the past few months. On site, the former Leisure Centre has now been demolished, and work is underway for the new purpose built Centre.

The new building is being constructed off-site using modern modular methods. This innovative approach has allowed for the simultaneous demolition of the old structure and the construction of the new one, significantly accelerating the project timeline.



## Construction



## Delivery of NHS services

